

Dear Parents/Carers

What a fantastic day we had at last Saturday at the Summer Fete! Families, friends, and staff came together to enjoy games, delicious food stalls, a raffle, and wonderful performances by our school choir and dance group. The sunshine and smiles made the day perfect. Thanks to everyone's generosity, we raised a substantial amount for the outdoor learning environment, including an enlarged pond area. Huge thanks to all the volunteers who made the fete such a joyful event — we can't wait to do it all again next year!

Our Year 6 pupils recently embarked on an exciting residential trip to PGL Caythorpe. For five action-packed days, they challenged themselves with outdoor adventures such as abseiling, canoeing, and orienteering. The children showed great teamwork, bravery, and enthusiasm throughout the trip, creating memories they will treasure forever. Staff were incredibly proud of the maturity and kindness the children displayed, making the trip a huge success!

Well done to our Year 3, 4, 5 athletes who took part in District Sports at Wodson Park yesterday. Unfortunately, we were unable to field a team of Year 6s due to their residential but our team competed with fantastic spirit and determination, representing Morgans with pride. We are so proud of everyone who took part — Mrs Klust, Mrs Turner and Mrs Beanlands were impressed with your sportsmanship and grit.

Finally, as the warm weather continues, we kindly ask parents to help ensure children stay safe and comfortable during the school day:

- **Water Bottles:** Please send your child to school with a *refillable water bottle* each day. Staying hydrated is essential!
- **Sun Protection:** Apply *sunscreen* before school
- **Hats:** A *sunhat* is a great way to protect from the sun during outdoor play. Please ensure it's clearly labelled with your child's name.

We will obviously make adjustments to lunch and break times by keeping children in the shaded areas. Thank you for your support in helping keep our pupils safe and well in the sunshine!

Have a lovely weekend ☀️

Helen Melidoro
Head Teacher



Dates for your Diary

03/07 Year 4 Lee Valley Park Trip

04/07 KS2 Piano Concert
@9:15am

04/07 FOMS Summer Disco

08/07 Year 6 Performance

10/07 Transition Day

14/07 Sports Day

15 & 17/07 Nursery Transition Day

22/07 End of Term - **1:15pm**

23/07 Inset Day

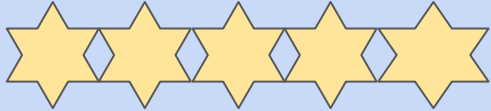
Learning power of the week





Stars of the Week

The following children were nominated by the MSAs for good manners and joined Mr Collin this week on the Star Table.



Reception- Mindy

Year 1 - Lily

Year 2 - Tahmid, Florence & Elliott

Year 3 - Stevie, Kyrese, Charlie & Talia

Year 4 - Lucas and Edwin

Year 5 - Teddy, Harry, Charlie, Quinton



Celebration Awards

The following children received a Celebration Certificates for showing exceptional learning:

Reception - Jack and Jiyaan

Year 1 - Eddie

Year 2 - Viktoriia

Year 3 - Art & Blake

Year 4 - Jack and Xenia

Year 5 - Quinton and Emily

Headteacher: Alby, Y3



Attendance

Attendance Registration	Present R/C: Marks
Nursery Oak	%
Reception	93%
Year 1	95.42%
Year 2	96%
Year 3	94.74%
Year 4	93.57%
Year 5	95.47%
Year 6	97.38%

Well done to Year 2 & 6 for winning Attendance Alpaca and Year 1 Punctuality Piglet



GUESS THE BOOK...

What shape is Mr. Strong in the Mr. Men series?

- A circle
- A triangle
- A square

Last Guess the book - The Book Quiz

Answer:

- Shere Khan





Dinner Menu



WEEK 1

STEP 1

Choose from...

Main

Vegetarian

Combo

STEP 2

...and to finish!

Bread and Salad will be available at Lunch Times

MONDAY

Cheese & Tomato Pizza
to go with
Mixed Pasta, Sweetcorn

Quorn Burger
to go with
Side Salad

Wrap
to go with
Salad Sticks
with choice of fillings
Grated Cheese, Tuna Mayo, Ham

Apple Sponge

Fresh Fruit Pot, Cheese and Biscuits, Jelly

TUESDAY

Chicken Korma
to go with
Carrots, Steamed Rice

Veggie Cowboy Pie
to go with
Peas

Pasta
with choice of fillings
Homemade Tomato & Basil Sauce

Wrap
to go with
Side Salad
with choice of fillings
Grated Cheese, Ham Salad, Tuna Mayo

Banana Bread and Butter Pudding
to go with
Custard

Fresh Fruit Pot, Yoghurt, Jelly

WEDNESDAY

Roast Chicken
to go with
Broccoli, Carrots, Roast Potatoes

Quorn Fillet
to go with
Broccoli, Roast Potatoes

Jacket Potato
to go with
Side Salad
with choice of fillings
Baked Beans, Grated Cheese, Tuna Mayo, Cheese & Beans

Wrap
with choice of fillings
Grated Cheese, Tuna Mayo, Ham

Homemade Fruit Shortbread

Fresh Fruit Pot, Yoghurt, Jelly

THURSDAY

Beef Enchilada
to go with
Sweetcorn, Homemade Potato Wedges

Cheese & Tomato Pasta
to go with
Side Salad

Jacket Potato
with choice of fillings
Baked Beans, Grated Cheese, Tuna Mayo & Cucumber, Cheese & Beans

Wrap
to go with
Salad Sticks
with choice of fillings
Grated Cheese, Tuna Mayo, Ham

Carrot, Apple & Lemon Drizzle Cake

Fresh Fruit Pot, Yoghurt, Jelly

FRIDAY

Cod in Batter
to go with
Chips, Peas

Quorn Sausages
to go with
Chips, Peas

Wrap
with choice of fillings
Tuna Mayo, Ham, Grated Cheese

Ice Lolly

Fresh Fruit Pot, Yoghurt, Cheese and Biscuits

Please speak to a member of the Catering Team or view relishschoolfood.co.uk for Allergen Information

Please discuss your child's meal choice and ensure your child knows their meal choice each day. We are unable to swap for an alternative once the children are in the dining hall

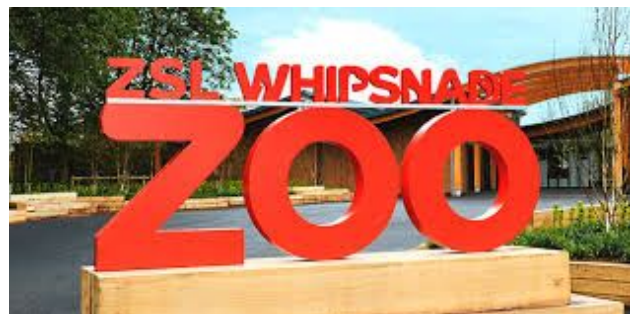


Year 1 Whipsnade zoo 2025



PIC-COLLAGE

**WHIPSNADE
ZOO**
a ZSL conservation zoo





Reading Book: Donations



Quick reminder: Reading book donations

As we celebrate an incredible milestone, 75 years of Morgans School, we are excited to honour our past while looking towards the future. One of the ways we plan to do this is by growing our recently improved school library, The Squirrels Drey, with books that inspire curiosity, creativity, and a lifelong love of reading. We have created a Book Wishlist to mark this special anniversary and we invite our families and alumni to take part in this meaningful initiative.

How you can help:

- Visit our 75th Anniversary Book Wishlist
<https://www.lovereading4kids.co.uk/wishlists/9d8c872cb9c9dd02afb45dc3220856f1>
- Choose a book (or books!) to donate
- If you would like to dedicate the book for a specific reason such as from a specific child or reason, please do so within the delivery method section. Details can be found here -> Delivery Method - Add a message for the school you are gifting the books to (optional)

Your generosity will not only enrich our library, but also help us create a lasting legacy within The Squirrel's Drey.

Thank you for being part of this incredible journey with us. Here's to 75 more years of nurturing life-long learning.

BARRACUDAS

ACTIVITY DAY CAMPS

HIGHLY RATED
School Holiday
Camps!!!



SCAN ME!

AT A SCHOOL NEAR YOU IN **2025!**
EXCLUSIVE PARENT DISCOUNT

USE CODE **SCHOOL20** FOR AN
EXTRA £20 OFF YOUR BOOKING!

*Minimum 2 days. *Not to be used in conjunction with other offer codes

- ⦿ 4 to 14 year olds!
- ⦿ 80+ Activities!
- ⦿ Choice each session!
- ⦿ Specialist Courses!
- ⦿ Flexible bookings!



✓ OFSTED REGISTERED



★ Trustpilot
★★★★★

barracudas.co.uk
01480 467 567

BARRACUDAS

ACTIVITY DAY CAMPS

Don't Stop Learning, try this!

1. Read a Book!
2. Bake something new!
3. Explore a new park!
4. Create a piece of art!
5. Learn about a new country!

SUBJECT WORD SEARCH!

1. Geography	2. Music	3. History	4. PE	5. Science	6. Art	7. English	8. Math					
Y	H	S	H	I	R	M	S	I	L	G	N	E
R	S	I	R	I	A	A	D	E	C	I	R	L
C	C	T	I	E	N	S	I	E	H	A	T	E
E	C	E	P	R	I	G	T	E	T	S	L	G
A	C	I	O	H	E	E	P	S	M	A	C	R
H	I	S	T	O	R	T	I	C	I	G	I	M
T	T	Y	E	N	T	I	S	V	C	G	S	
H	R	C	H	C	A	S	T	E	T	G	I	N
N	O	A	S	C	H	R	R	N	R	C	H	P
H	A	R	T	I	H	R	E	C	Y	N	E	I
T	R	U	I	H	I	T	H	E	V	I	N	C
S	H	T	T	I	N	C	C	I	T	I	A	C
Y	G	T	T	Y	H	P	A	R	G	O	E	G
E	E	G	I	N	S	T	I	A	S	H	T	I

SCHOOLS OUT!
FIND YOUR WAY HOME!



SCAN ME!
to see more info about our camps!

SCHOOLS OUT!

How many SUNS can you see?

PUT A FACT
In England and Wales, school attendance became compulsory for children between the ages of 5 and 10 in 1880!

HEY!
I'm BILLY Barracuda! Summer has arrived! It's time to jump in the pool and play in the sun!

3 Things I learned this year!

1. _____
2. _____
3. _____

KNOW YOUR ABCS?
Order the words in alphabetical order for example... 1. Apple, 2. Ball etc

A B C

1. _____
2. _____
3. _____
4. _____
5. _____
6. _____
7. _____

ANSWERS

June 17
WORD SEARCH
1. Barbecue
2. Beach
3. Picnic
4. Flowers
5. Ice cream
6. Sunshine
7. Barbecue

Visit barracudas.co.uk
or call 01480 467 567

Hertford Children's Choir is recruiting for new members to join an exciting programme of events. We meet on Fridays 5:30-6:45pm at St Andrew's Church and perform regularly in the community. We recently performed for the Mayor and on the main stage at Ecofest at Hertford Castle. In the Autumn we will be collaborating with Hertford Choral Society for a special concert in All Saint's Church.

There is a termly membership contribution of £50 and assisted places are available. The choir is for children aged 8-13.

To register your interest and sign up for a *free trial* fill in the online form [here](#). (flyer attached)



scan to find
out more
and register
FOR FREE TRIAL



For children aged 8-13 who love singing and want to develop their musicianship.

Weekly rehearsals Fridays 5:30-6:45pm
@St Andrew's Church Hertford.

Regular performance opportunities in concerts,
local events and services.

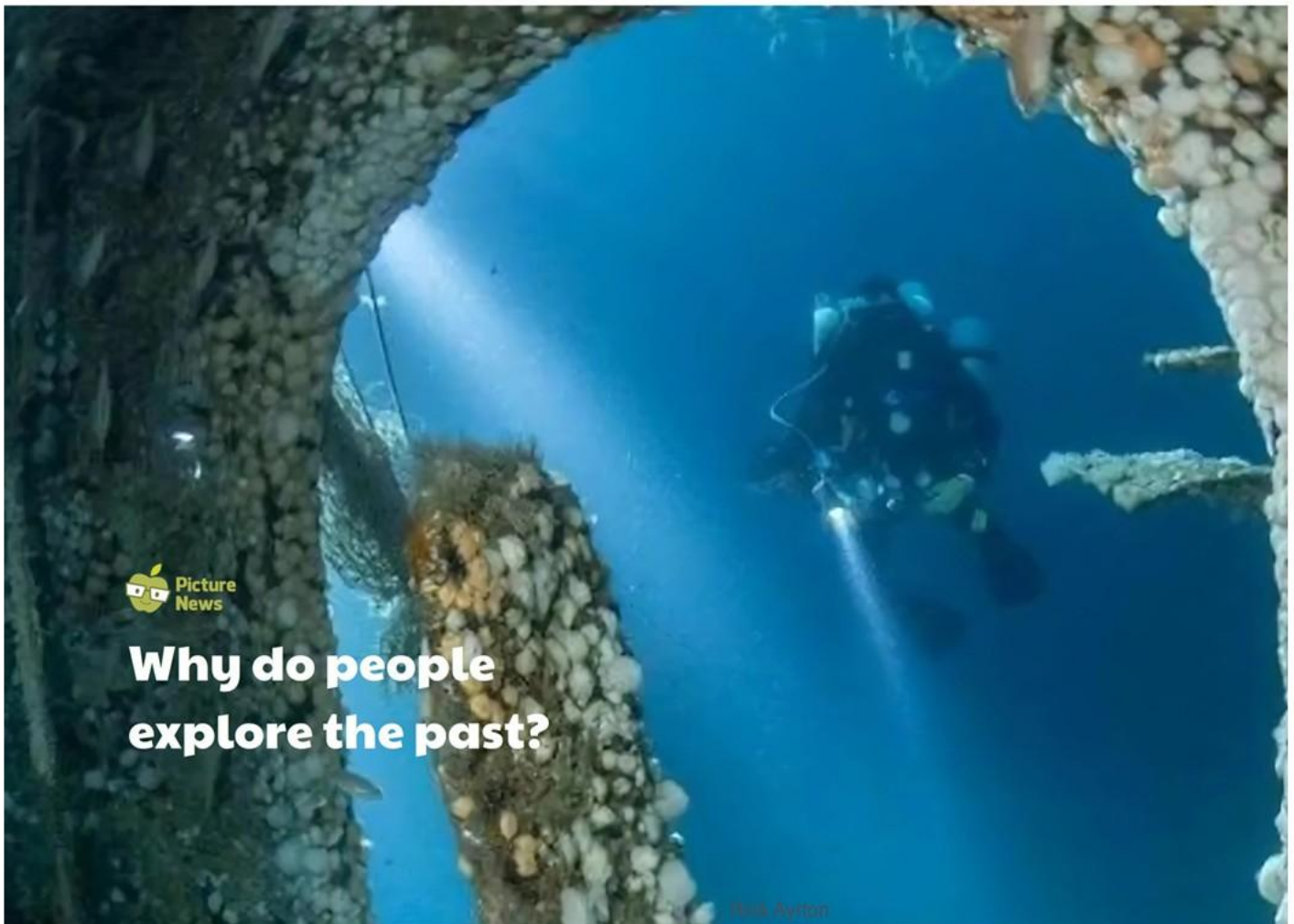
www.tinyurl.com/hertfordchildrenschoir

Join Us!



Led by Sam and Rachel Chaplin

Picture News Update



Let's look at this week's story



Nearly 140 years after it sank, a team of divers has identified the wreck of a ship, called the SS Nantes, off the coast of Devon, in southwest England. The ship sank in 1888, after crashing into another boat. The shipwreck could finally be named when a diver found a plate with the ship's company logo (or crest) on it.

Learn more about this week's story [here](#).
Watch this week's useful video [here](#).
This week's Virtual Picture News [here](#).



Music News Update



HOME INFORMATION



June's Musician of the Month

ARETHA FRANKLIN



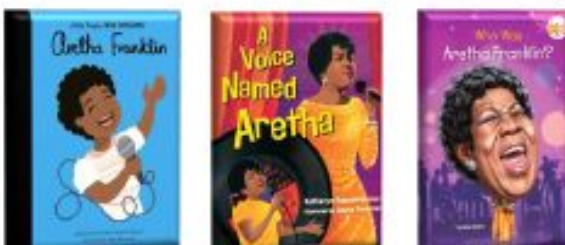
About: Aretha Louise Franklin was an American singer, songwriter and pianist. Referred to as the "Queen of Soul", Rolling Stone twice named her as the greatest singer of all time in popular music. As a child, Franklin was noticed for her gospel singing at New Bethel Baptist Church in Detroit, Michigan, where her father C. L. Franklin was a minister. She went on to sell over 75 million records worldwide and received 18 Grammy Awards. From her time growing up in the home of a prominent African-American preacher to the end of her life, Franklin was immersed and involved in the struggle for civil rights and women's rights.

Genres: R&B/Soul, Gospel and Jazz

Active from: 1954-2017

Origin: Memphis, Tennessee, U.S.A.

Books to read...



If you like Aretha Franklin, try...

- Etta James
- Ann Peebles
- Al Green



Attendance Matters

100%	0 Days	0 Lessons Missed
99%	1 Day	5 Lessons Missed
98%	3 Days	15 Lessons Missed
97%	1 Week	25 Lessons Missed
96%	1.5 Weeks	35 Lessons Missed
94%	2 Weeks	50 Lessons Missed
93%	2.5 Weeks	65 Lessons Missed
92%	3 Weeks	75 Lessons Missed
90%	3.5 Weeks	90 Lessons Missed

Attendance Matters

Here every day

Here on time

Getting your child to school really matters. Did you know...

If your child's attendance during the school year...

was 95%
was 90%
was 85%
was 80%
was 75%

Your child would have lost approximately...

9 Days from School
19 Days from School
29 Days from School
38 Days from School
48 Days from School

Or they would have missed approximately...

50 Lessons
100 Lessons
150 Lessons
200 Lessons
250 Lessons



Attendance Alpaca

Punctuality Piglet

Getting your child to school really matters. Did you know...

If in a school year, your child is late every day by...

5 Minutes
10 Minutes
15 Minutes
20 Minutes
25 Minutes

Your child would have lost approximately...

3.5 Days from School
7 Days from School
10 Days from School
14.5 Days from School
22 Days from School

Or they would have missed approximately...

20 Lessons
41 Lessons
55 Lessons
82 Lessons
123 Lessons

The year group with the best weekly punctuality and attendance will have the privilege of having 'Attendance Alpaca' or 'Punctuality Piglet' in their classrooms for a week. How exciting!

Uniform is an important part of a school's identity. It reinforces who we are as a community and helps allow pupils to feel pride in their school. It also helps prepare pupils for life after primary school where many will have to dress smartly for their next stage of their education and then latter on in their work.

It would be fair to say that, in the last week we have a number of interpretations of what is and is not acceptable uniform and we believe it is time to clarify our expectations for pupils and parents.

The following items are part of our **essential** school uniform:

Navy blue v-necked jumper/sweatshirt or cardigan. Hoodies are not permitted

Light blue polo shirt

Grey trousers, shorts, skirt or pinafore dress

Light blue, round neck PE t-shirt

Plain navy blue PE shorts (not cycling shorts)

PE trainers (velcro unless pupil can tie laces)

Black school shoes - **trainers, boots, sandals or shoes with heels are not permitted**

Black/grey/white socks or tights (ankle or knee high not trainer socks)

Optional school uniform

- Navy blue jumper/cardigan with school logo
- Light blue PE t-shirt with school logo
- Plain (not branded) navy blue joggers/tracksuit for PE during winter months
- Light blue gingham summer dresses during summer term (until Autumn half term)

There are no restrictions on the colour of school coats

School bags/rucksacks should be large enough to carry school equipment e.g. reading book, pencil case, jotter, packed lunch and water bottle

Jewellery is not permitted unless it is worn for religious reasons. Pupils with pierced ears may wear small stud earrings only. Earrings must be removed for PE/sports activities

Smartwatches/Fitbits are not permitted

Long hair (shoulder length or longer) must be tied back at all times

Small hair accessories must be navy blue, black or brown

Nail varnish is not permitted.

Haircuts should be appropriate for school

Thank you for your support and understanding.

2024-2025 & 2025-2026

Autumn Term 2024

Tuesday 3rd September – Friday 20th December 2024 (1.15pm finish)

Inset Day 1: Monday 2nd September 2024

Inset Day 2: Friday 25th October 2024

Half-Term: Monday 28th October to Friday 1st November 2024

Inset Day 3: Friday 22nd November 2024

Christmas Holidays: Monday 23rd December – Friday 3rd January 2025

Spring Term 2025

Monday 6th January – Friday 4th April 2025 (1.15pm finish)

Half-Term: Monday 17th February to Friday 21st February 2025

Inset Day 4: Monday 24th February 2025

Easter Holiday: Monday 7th April – Monday 21st April 2025

Summer Term 2025

Tuesday 22nd April – Tuesday 22nd July 2025 (1.15pm finish)

Bank Holiday: Monday 5th May 2025 (May Day)

Inset Day 5: Friday 23rd May 2025

Half-Term: Monday 26th May to Friday 30th May 2025

Occasional Day: Wednesday 23rd July 2025

Autumn Term 2025

Thursday 4th September – Friday 19th December 2025 (1.15pm finish)

Inset Day 1: Wednesday 3rd September 2025

Inset Day 2: Friday 24th October 2025

Half-Term: Monday 27th October to Friday 31st October 2025

Christmas Holidays: Monday 22nd December – Friday 2nd January 2026

Spring Term 2026

Monday 5th January – Friday 27th March 2026 (1.15pm finish)

Half-Term: Monday 16th February to Friday 20th February 2026

Inset Day 3: Monday 23rd February 2026

Easter Holiday: Monday 30th March – Monday 10th April 2026

Summer Term 2026

Monday 13th April – Tuesday 21st July 2026 (1.15pm finish)

Bank Holiday: Monday 4th May 2026 (May Day)

Half-Term: Monday 25th May to Friday 29th May 2026

Inset Day 4: Monday 1st June 2026

Inset Day 5: Wednesday 22nd July 2026

Occasional Day: Thursday 23rd July 2026

Parking Reminder

A reminder about parking:

Please remember not to park in the school car park at drop off or pick up from the Dell. The car park is open in the morning to allow ease of access for staff parking.

Parking for any school is always an issue and our school is no exception. The Senior Leadership Team regularly monitors and reviews parking outside Morgans School. We would emphasise the importance of safe and courteous parking outside our school at drop off and collection times.

For many years at Morgans we have always had our main aim of keeping our children **safe**.

As adults, we are role models to all children and should always behave in a courteous and respectful manner to fellow drivers, pedestrians, neighbours, staff and visitors.

By following these points, you will be helping to ensure that drop off and collection times at Morgans are as safe as possible. We would like you to support us in this and ask that you observe the request so that we all do our utmost to keep everyone safe. We kindly ask you to approach the school using the following route and support us by following the important points below:

- If you access Morgans Road from Bullocks Lane, please follow the road round to the left into Highfield Road, then turn right into Queens Road which leads into Morgans Road, the school will be on your left.
- Walk to school whenever possible, including parking further from the school and walking the last part of the journey.
- Please obey all road signs on our school site, including the no entry signs on the car park gate at drop off and pick up times.
- Do not park, drop off or pick up across the yellow zig zag lines or areas for emergency access – this is illegal and dangerous.
- Do not park on the pavement or grass verges both on and off our school site.
- Do not block resident drives – help us to be **collaborative** with our neighbours and local residents.
- Do not park in the staff car park unless you are collecting a sick child.
- Do not park in the designated disabled bays unless you hold a valid disability parking permit.

We thank you for your support and understanding.

