



## ON SAFARI

### Vocabulary

**abdomen:** this is the third, last part of an insect

**antennae:** feelers on the head that sense the surroundings and can be used to taste, see, smell and hear

**detritivore:** an animal that feeds on decaying things such as dead leaves and animals, e.g. woodlice and worms

**exoskeleton:** an external hard body covering, providing protection and support

**food chain:** the order that organisms are eaten by each other

**habitat:** a habitat is where an animal lives

**head:** the first part of an insect, which has the eyes, mouthparts and antennae

**insect:** insects are invertebrate animals that have three main parts to their body

**invertebrate:** invertebrates are animals without backbones

**thorax:** this is the middle part of an insect's body.

**vertebrate:** animals that have backbones, e.g. fish, birds, mammals

### We are learning to:

- To identify and name common animals
- To describe the structure of common animals
- To identify and classify animals
- To ask simple questions about animals
- To find answers to questions about animals

### WHAT ARE MAMMALS?

- Give birth to live young
- Usually have hair or fur
- Warm-blooded
- Cannot breathe underwater

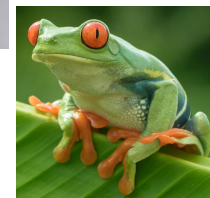


### WORKING SCIENTIFICALLY

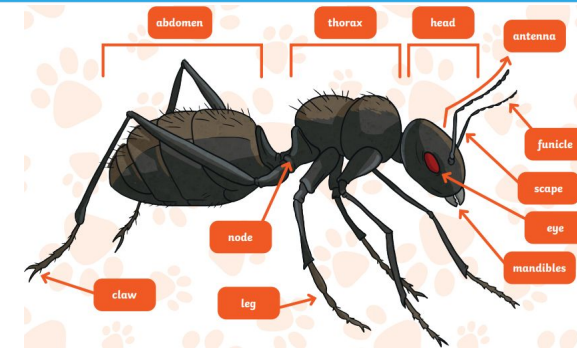
Looking for patterns-sorting and grouping.		Asking questions.	
Using books, videos, the internet, people and photos to find answers.		Explaining results-saying what we found out.	
Recording information.		Saying why a test is unfair.	
Observing and measuring.		Performing simple tests and using equipment.	

### WHAT ARE BIRDS?

- Warm-blooded
- Have wings and beaks
- Have feathers
- Lay eggs
- Some common birds are ducks, chickens, penguins and pigeons.



The blue whale is the largest animal on Earth, even bigger than the largest dinosaur.



### WHAT ARE FISH?

- Breathe underwater using gills
- Lay eggs in water
- Cold-blooded
- Have fins and scales
- Some common fish are salmon, cod and tuna.

### WHAT ARE REPTILES?

- Cold-blooded
- Lay eggs
- Have scales
- Cannot breathe underwater
- Some common reptiles are snakes and lizards.

### WHAT ARE AMPHIBIANS?

- cold-blooded
- lay eggs
- live on land and water
- can breathe underwater through gills
- Some common amphibians are frogs and toads.