



Welcome to Morgans Primary
School

Nurturing Life-long Learning

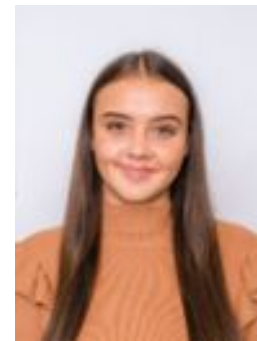


Meet the Reception team:



Class Teacher

Miss Campbell



Teaching Assistants

Miss Shoesmith, Mrs Clay and Mrs Khan

Aims

- To give you an overview of your child's time in Reception.
- To give ideas about how we can work together and about how you can best support your child at home.
- To help you understand what to expect from us.

Beginning of the school day

- Queens and Mandeville school gates open at 8:30am and Classroom doors open just before 8:45am. Children should be in class for an 8:45am start.
- If your child is worried about coming into school in the morning, please support them by beginning to 'say goodbye' upon entering through the gate, so they can enter the classroom prepared and with ease.
- Please ensure your child is ready for the day with their bookbag, a water bottle and a coat (weather dependent).

The end of the school day

- At end of the school day the gates will open promptly at 3.10pm and close at 3.30pm.
- Please pick up your children outside the classroom door for 3:15pm.
- If you need to pass on any messages, please try to wait until the majority of children have been collected for safeguarding reasons.
- Within the next couple of weeks, we will be sending home an additional consent form in case you need to update who can collect your child from the classroom.

Preparation for Reception

- Please ensure your child comes into school in the correct **labelled** uniform.
- PE kits, wellies, coats, water bottles and packed lunch boxes should also be named.
- Children will need a pair of wellies for the sandpit and any particularly muddy / wet weather.
- Children will be changing at school for PE lessons so the kit will need to remain in school each week. We recommend taking home at the end of each half term to be washed.
- P.E. lessons will be on a Wednesday morning.
- Children are not required to bring any stationary. When we begin to send reading books home, these must be in their bag each day, in the named zippy wallet we will provide.
- Friday morning is our slot to visit the school library. Your child will only be able to change their library book if they bring back their original library book.
- School dinners should be selected on 'Relish' in advance. Please advise the office of any dietary requirements if you have not done so already.



Uniform

School Uniform

Know that school uniform consists of –

- Grey school-style pinafore or skirt or grey school-style trousers
- Navy blue jumper/cardigan
- Light blue polo shirt
- Light blue/white checked dress or grey shorts for summer

Jewellery

Know that, on health and safety grounds, we do not allow pupils to wear jewellery in school.

Earrings (studs) must be covered with tape if they cannot be removed and watches removed. Long hair needs to be tied back for safety.

PE

Know that, for PE, pupils must wear navy blue shorts or navy blue tracksuit bottoms, light blue T-shirt, trainers for outside. A sweatshirt can also be worn in colder months (no brands)

Know that indoor PE is done in bare feet.



Behaviour

Know that there are three behaviour principles. These are to

- be safe,
- be respectful,
- be ready to learn.

Be Safe	Be Respectful	Be Ready to Learn
<p>Follow the rules in the classroom and playground</p> <p>Accepting responsibility if you make a mistake and saying sorry</p>	<p>Say please and thank you</p> <p>Hold doors open for adults</p> <p>Talk kindly to other pupils</p> <p>Say good morning/afternoon to adults</p>	<p>Listening carefully to the teacher, giving 100% attention</p> <p>Sitting still</p> <p>Working hard on tasks given</p>

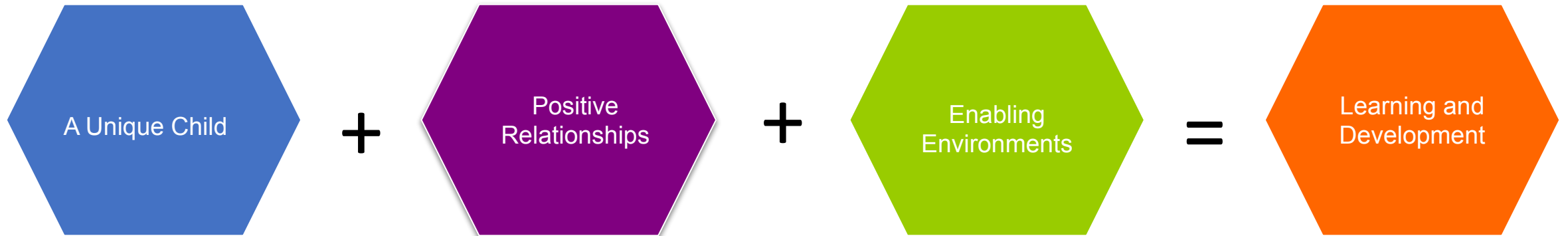


7 Learning Powers – School Values

- Curiosity
- Commitment
- Confidence
- Craftsmanship
- Communication
- Collaboration
- Creativity



Themes of the EYFS

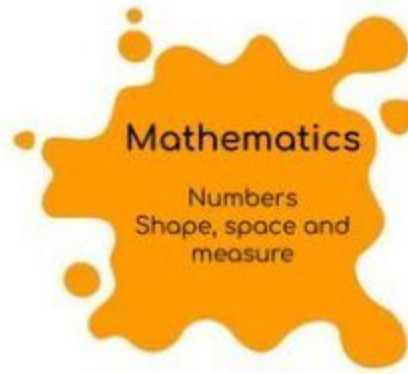


Areas of Learning and Development

Prime Areas



Specific Areas





Reception

Communication and Language



In the Autumn term, we will spend a lot of time focussing on the children's ability to listen carefully and develop their understanding of why listening is important. They will follow simple instructions, whilst also listening to and communicating with peers and adults in conversation. The children will be encouraged and taught how to use correct vocabulary in their speech, when speaking with friends and adults. Their language will also be developed in our 'Talk through stories' lessons.

Personal, Social and Emotional Development



In the Autumn term, our focus will be settling the children into their daily routine, supporting them in forming positive relationships and friendships, whilst providing strategies to help them understand and manage their feelings.

Using 'Jigsaw', we will follow the units 'Being Me in My World' and 'Celebrating Difference'.

Physical Development



In the Autumn term, children will develop their gross and fine motor skills in their play, developing skills such as cutting, threading, pinching and mark making. They will also take part in 'Dough Disco' sessions, to help develop their fine motor skills.

In our weekly PE lessons, children will develop key skills such as running, jumping, throwing, catching, rolling and skipping.

Values

The value for the first half of term =



The value for the second half of term =



Mathematics



In Autumn 1, children will begin to match, sort and compare numbers. Children will develop a secure understanding of numbers 1, 2 and 3, whilst also exploring and creating simple patterns.

In Autumn 2, children will begin to explore shapes in our environment and secure their understanding of numbers 4 and 5.

Understanding the World



In the Autumn term, as part of our 'All About Me' topic, children will talk about themselves, their families, their hobbies and recognise similarities and differences between themselves and their peers. As we explore the changes of Autumn, children will be able to discuss their natural environment and use their senses to discuss seasonal changes. We will learn about different religious celebrations that happen during Autumn, including Diwali and Christmas.

Literacy and Phonics



In the Autumn term, children will learn to read and write single letter sounds, through Read Write Inc sessions, and throughout their play. Children's vocabulary will be enhanced through our 'Talk through stories' sessions, where we will read lots of lovely and vocabulary rich stories, such as 'Five Minutes Peace'.

Expressive Arts and Design



In the Autumn term, children will create self-portraits, as part of our 'All About Me' topic, detailing their facial features using a range of colours. Children will use different mediums and materials to create collage pictures, such as pencils, crayons, water colours and tissue paper. Children will experiment with instruments and body percussion to create music. They will also learn songs linked to Christmas and Winter, to perform to an audience.

In Reception children are expected to:

- Talk to you about their day and share their learning.
- Read books that will be sent home based on their Phonic ability.

For more info,
scan this QR code!



Safeguarding

- At Morgans we are committed to safeguarding our children.
- Our designated safeguarding staff in school are Mrs Melidoro, Mrs Vicary, Miss Cosh and Mr Collin. If you have safeguarding concerns please speak to a member of staff who will direct you accordingly.

How do we communicate with you?

Any concerns?

Communication is so important. It plays a huge role in ensuring that you are regularly sharing information with us to best support your child.

We do this by...

- A quiet word at the start or end of the day
- Arranging appointments
- Termly parent consultation meetings
- Weekly newsletter
- Termly Curriculum Information Letter
- Notices around school
- Social media – Facebook, Twitter, Instagram
- Email – admin@morgans.herts.sch.uk
- School website – <https://www.morgans.herts.sch.uk>



Reception: Key Dates for the year ahead

Autumn Term

Phonics Meeting: Monday 23rd September at 2.30pm.

Parent Consultations: Tuesday 15th October and Thursday 17th October.

EYFS Christmas Songs: Thursday 12th December at 9.30am.

Spring Term

Parent Consultations: dates tbc.

Summer Term

School trip to Willows Farm: date tbc.



Link parents

- A link parent acts between the teacher and the parents in the class, e.g. if the teacher wants help in the class, on school trips or with readers, the teacher can ask the link parent to find some volunteers. The link parent(s) would not be expected to always volunteer.
- Link parents have the opportunity to be on the Parent Council which meets with the head teachers approximately twice a term to provide feedback and ideas on school issues.
- If you are interested, please let us know.

Pupil Premium



There are so many benefits available to you:

Children qualify for [free school meals](#) – and accordingly pupil premium – if you receive any of the following benefits:

- Universal credit (provided you have a net income of £7400 or less)
- Income support
- Income-based jobseekers' allowance
- Income-related employment and support allowance
- Support under Part IV of the Immigration and Asylum Act 1999
- The guaranteed element of state pension credit
- Child tax credit, provided that you are not also entitled to working tax credit and have an annual gross income of £16,190 or less

If you have any individual questions, concerns or queries, then please remain behind at the end to discuss or share.

Thank You...